



PADUCAH • McCRACKEN COUNTY

CONVENTION & EXPO CENTER

415 Park Street • Paducah, KY 42001 • 270.408.1346 • www.paducahconventions.com



80,000 SQUARE FEET OF EXHIBIT SPACE • 20,000 SQUARE FEET OF BALLROOM SPACE • 29,358 SQUARE FEET OF MEETING SPACE



TABLE OF CONTENTS

WELCOME4

FACILITIES.....5

CONVENTION CENTER6

MEETING ROOMS8

EXPO CENTER10

FOOD & BEVERAGE12

SERVICES & EQUIPMENT14

BOOKING15



WELCOME TO PADUCAH!

Your home away from home. Our community can't wait to join together and make your event a success. Located on the beautiful Ohio River, our quaint downtown provides your guests with picturesque views, cozy shops and delicious cuisine. One of only 354 cities globally considered part of the United Nations Educational, Scientific and Cultural Organization's Creative Cities Network, Paducah is a local hub for artists, artisans and craftsmen alike. From visiting local boutiques downtown to exploring the National Quilt Museum, there's no shortage of activities to entertain your guests during their downtime.

Paducah is the perfect location to host events of any size, small or large. A true convention complex complete with intimate meeting spaces, spacious conference rooms and expansive, multipurpose exposition areas. With the Paducah Sports Park due to open in fall 2025 in addition to the sports facilities currently available, Paducah will soon become a local hub for sports tournaments as well.

Paducah has over 2,000 hotel rooms within 5 miles of the convention center, including ample lodging conveniently located right next door. Guests will find national brands and local hoteliers throughout the area, providing options for any preference.

PADUCAH

UNESCO CREATIVE CITY



FACILITIES

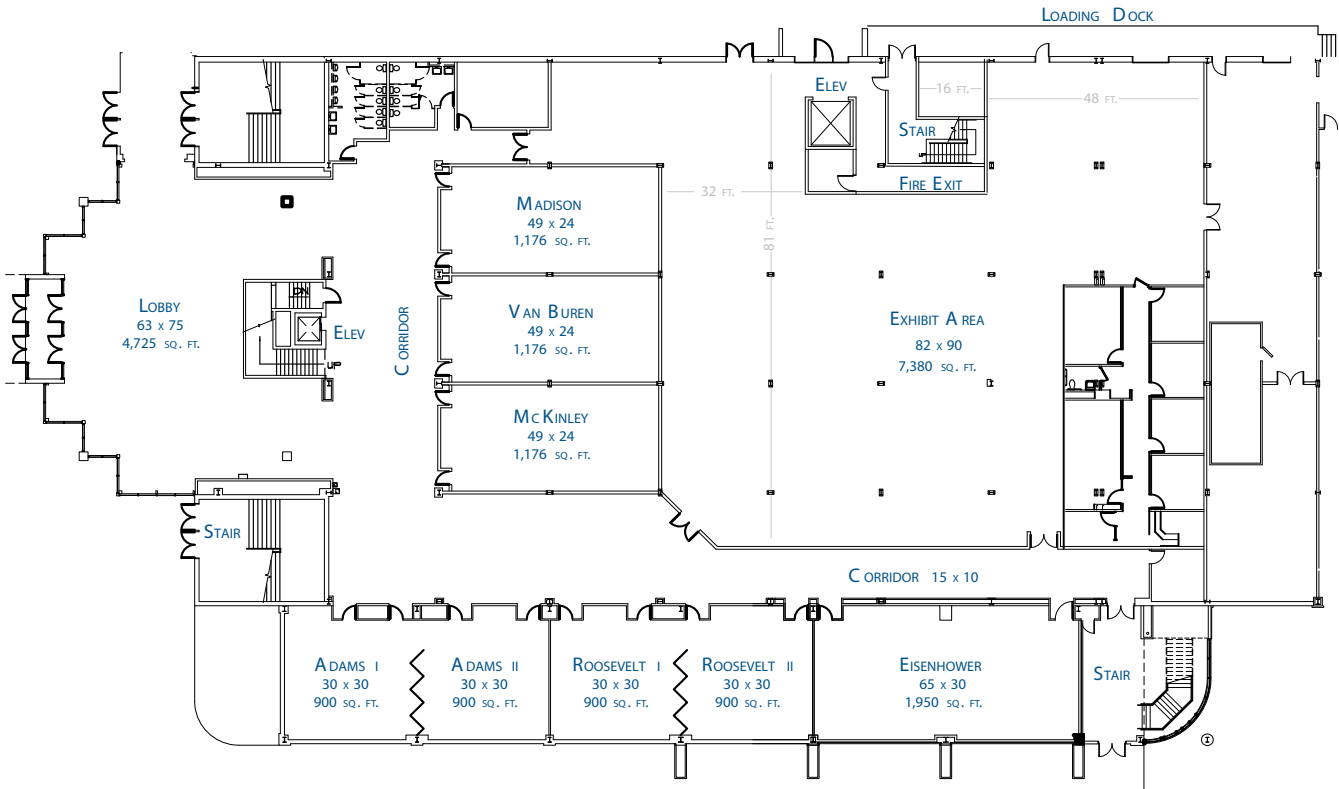
With over 100,000 square feet all conveniently located under one roof, our state-of-the-art facilities offer the space, flexibility and amenities you've been looking for. With a variety of room setups available, our spaces can be adapted to best suit your event's needs regardless of size. Paducah McCracken County Convention & Expo Center provides both free and convenient access to ample parking for you and your guests, including semi-truck and trailer parking and 550 parking spots available on-site at no extra charge.



CONVENTION CENTER



LOWER LEVEL



50,983 sf

Total Multi-Purpose Indoor Space

13 Breakout Rooms

17 Event Rooms

LOWER LEVEL CAPACITIES

AREA	SIZE	SQ. FT.
LOBBY	63x75	4,725
McKinley	49x24	1,176
Van Buren	49x24	1,176
Madison	49x24	1,176
Adams 1	30x30	900
Adams 2	30x30	900
Roosevelt 1	30x30	900
Roosevelt 2	30x30	900
Eisenhower	65x30	1,950
Exhibit Area	90x82	7,380

*Adams 1 + 2 can be combined to be = 1800 sq
*Roosevelt 1 + 2 can be combined to be = 1800 sq



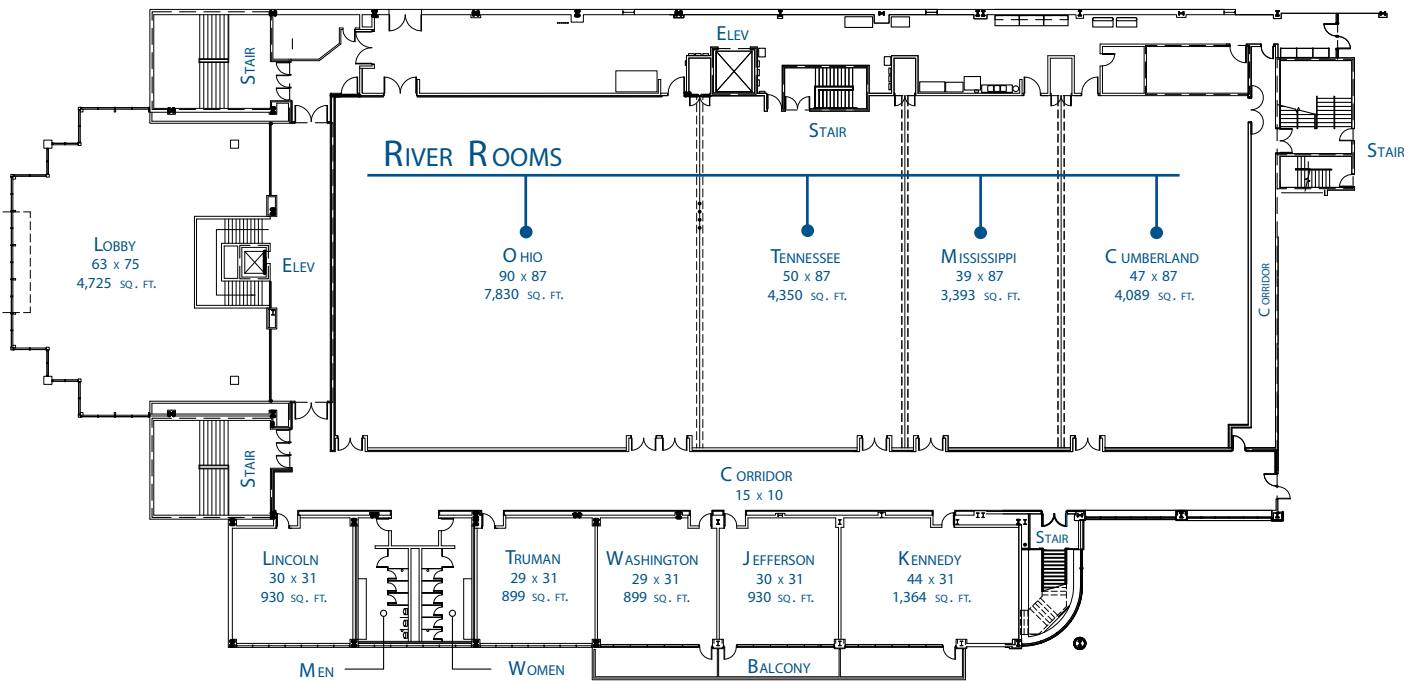
UPPER LEVEL CAPACITIES

AREA	SIZE	SQ. FT.
LOBBY	63x75	4,725
Ohio	90x87	7,830
Tennessee	50x87	4,350
Mississippi	39x87	3,393
Cumberland	47x87	4,089
Lincoln	30x31	930
Truman	29x31	899
Washington	29x31	899
Jefferson	30x31	930
Kennedy	44x31	1,364

*Ohio, Tennessee, Mississippi and Cumberland can be used in conjunction with another space – i.e. OH/TN, TN/MS, MS/CU, OH/TN/MS/CM



UPPER LEVEL



MEETING ROOM SET-UPS

Room Name	Theatre	Classroom 30/18	Banquet (8ft)	Rounds (5ft)	Hollow Square	U Shape	Square Footage
Ohio	783	355/NA	480	360	N/A	223	7,830
Tennessee	350	140/NA	200	144	96	84	4,350
Mississippi	200	100/150	160	96	88	80	3,393
Cumberland	475	220/NA	250	200	104	88	4,089
Kennedy	100	40/56	56	48	40	40	1,364
Jefferson	75	24/32	32	32	24	24	930
Washington	40	24/28	24	24	20	20	899
Truman	75	24/32	40	32	24	24	899
Lincoln	60	24/32	32	32	24	24	930
Eisenhower	150	75/100	120	80	60	56	1,950
Roosevelt I	60	24/32	48	40	24	28	900
Roosevelt II	60	24/32	48	40	24	28	900
Adams I	60	24/32	48	40	24	28	900
Adams II	60	24/32	48	40	24	28	900
Madison	75	40/48	56	56	32	32	1,176
McKinley	75	40/48	56	56	32	32	1,176
Van Buren	75	40/48	56	56	32	32	1,176
Exhibit Area	N/A	N/A	N/A	N/A	N/A	N/A	7,380

River Room Dimensions/ Booth Space		Ceiling Heights	Special Notes:
Ohio	40 Booths	River Rooms: 11'10"	· Setting head tables in River Rooms off kitchen wall and folding walls will decrease space for banquet setup. · Head tables not set on dance floor may reduce seating capacity for theater and classroom style seating. · Handicapped access will decrease sitting space.
Tennessee	28 Booths	Presidential Rooms: 9'	
Mississippi	17 Booths	Madison/Van Buren/McKinley: 7'10"	
Cumberland	29 Booths		
Total = 114 Booths			

These calculations are an approximation of room capacity. Extra room square footage will need to be subtracted to accommodate staging and audio-visual requirements, especially near projection. Also allow for any obstructions, actual shape of the room, number of exits and local fire codes.

*Ohio, Tennessee, Mississippi and Cumberland can be used in conjunction with another space – i.e. OH/TN, TN/MS, MS/CU, OH/TN/MS/CM



EXPO CENTER

39,204 sf

Total Multi-Purpose Indoor Space

200+ Booth Capacity

228 - 10x10 | 282 - 10x8

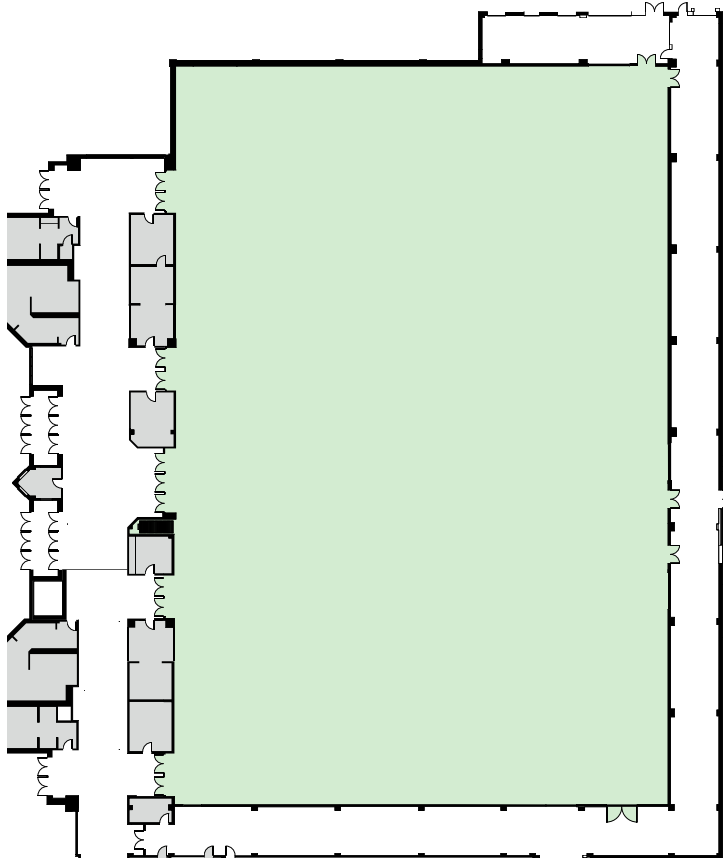
26 ft Ceiling Height

LED Lighting Scene Capability

Electrical Options

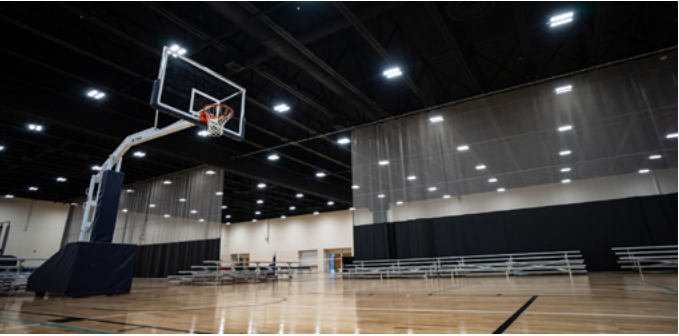
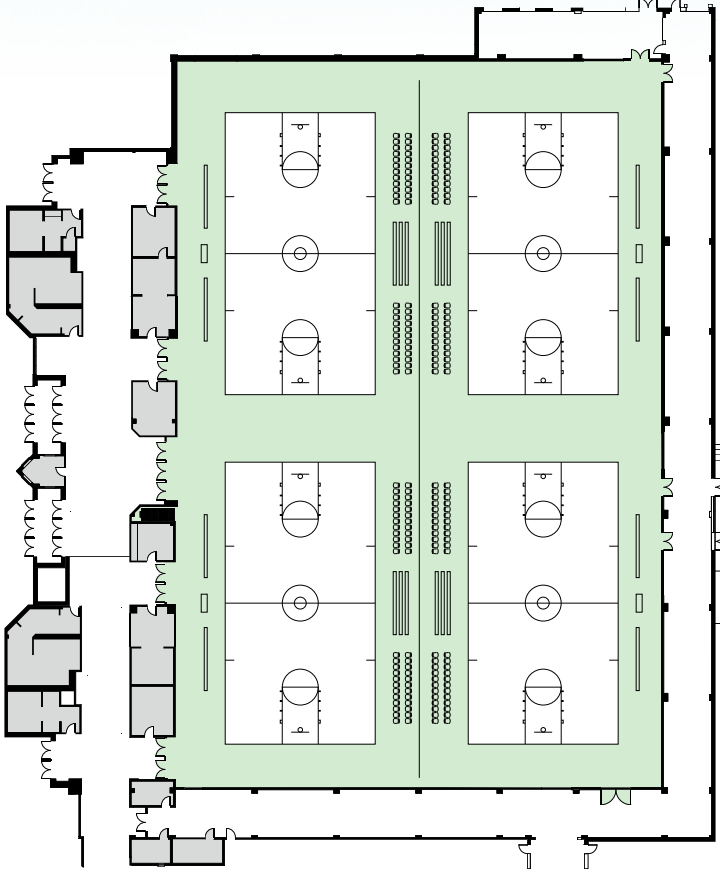
60 AMP | 220 VOLT | 220 VOLT (Optional)

The Bill & Meredith Schroeder Expo Center has 1 freight dock & 2 loading bays.



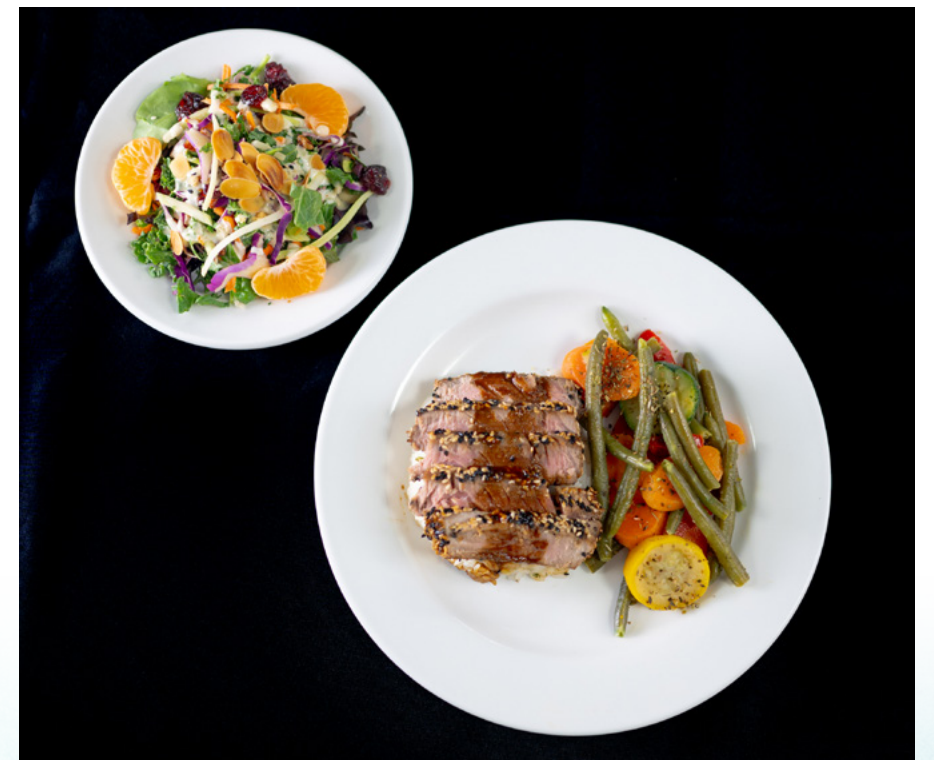
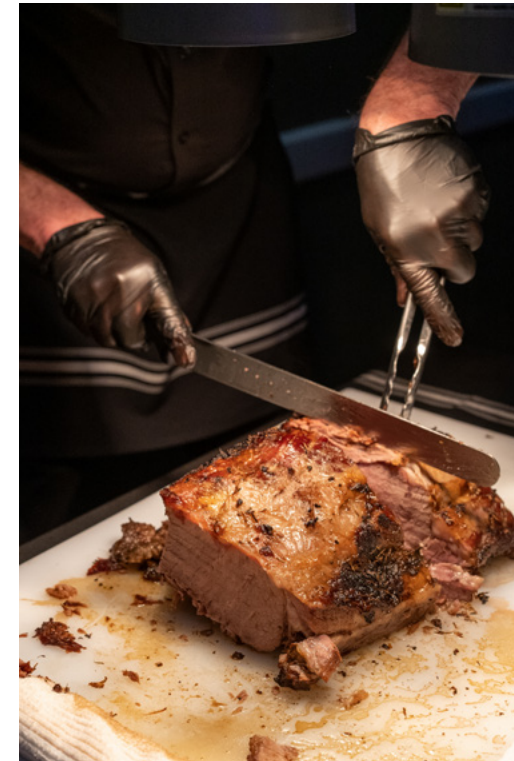
EXPO SPORTS FACILITY

The expo is also multi-purpose indoor sports facility and can be designed to accommodate eight college size volleyball courts or four full size basketball courts and has ample space for athletes and their families. The facility is also equipped with a floor covering which will allow for alternative indoor sporting events such as cheer and dance competitions, wrestling and pickle ball.



FOOD & BEVERAGE

Paducah McCracken County Convention & Expo Center's gourmet menu is fully prepared fresh for each event by a chef and full kitchen staff. Menus can easily be customized to accommodate event themes, special dietary needs and allergies. Our dishes are plated on real china and served with real silverware, never plastic. We also offer a full bar with a wide array of upscale options including fine bourbon and craft beer. Our food and beverage service has been perfectly crafted to give your guests a luxurious dining experience without an exorbitant cost!



SCAN THE QR CODE TO SEE OUR FULL MENU!

SERVICES & EQUIPMENT

Our commitment to excellence doesn't end with an incredible space and top-of-the-line food and beverage service. We also can connect you with all the services, equipment and supplies you need to make your event a success! Our staff can help with every step in the event planning process from help with picking the right space and layout, to rental packages that include furniture, decor, linens, dance floors, lighting and A/V equipment, and even staffing to make sure your event runs smoothly. Our close knit community also means we can connect you with the best local photographers, videographers, bands, DJs, decorators, and more.

OUR EQUIPMENT

- Staging
- Drapes
- House Scissor Lift
- Lecterns
- Wireless & Internet
- Extension Cords
- Tables & Chairs
- Power Strips
- Projection Screens

OUR SERVICES

- First Aid & Paramedic
- T-shirt supervisor
- T-shirt security
- Event security
- Scissor lift operator

BOOKING

**For information on booking, contact our
Sales Manager, Angela Hanor-Yeisley**

Cell: (270) 559-9805

Office: (270) 408-1346

Email: angela@paducahconventions.org



NONPROFITS AND GOVERNMENT AGENCIES, ASK ABOUT OUR SPECIAL PRICING OPTIONS!



PADUCAH • McCRACKEN COUNTY
CONVENTION & EXPO CENTER



PADUCAH • McCRACKEN COUNTY

CONVENTION & EXPO CENTER

415 Park Street • Paducah, KY 42001 • 270.408.1346 • www.paducahconventions.com